

## 2 LEVER RESTROOM CLEANING

### Tools Needed

- Properly Supplied 2 Lever Cleaning Center
- Bathroom Cleaning Brush
- Disposable Towels
- Deck Brush
- Squeegee
- Gloves

### Product Needed

Comet Cleaner®  
with Bleach



Spic and Span  
Disinfecting  
All-Purpose  
Spray and Glass  
Cleaner® (3-in-1)



**FREQUENCY OF CLEANING:** When a thorough, deep cleaning process is needed.

**SPECIAL DIRECTIONS FOR THIS TASK:** Wear disposable gloves to help minimize contact with germs.

**This is a deep cleaning restoration process. To conduct this cleaning, the restroom must be closed. Special attention must be made to ensure that the floors are dry before putting these restrooms back into service.**



#### STEP 1

- Close restroom to both employee and customer use.
- Keep the restroom door open for ventilation.



**NOTE:** Put on disposable gloves.

- Open the cabinet where the 2 lever cleaning unit is stored.

#### STEP 2

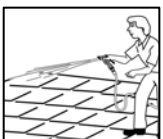
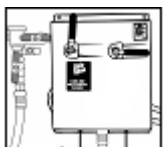
- Remove all dry trash from the floors and dispose of in trash receptacles.
- Discard trash in appropriate location making sure that any liquid does not drip onto floor and cause a possible wet floor hazard.



**NOTE:** Follow the Trash Receptacle Cleaning Procedure to clean cans as needed.

#### STEP 3

- Apply diluted Comet with Bleach Liquid detergent solution using the 2-lever dilution center:
  - Turn the Comet with Bleach (left) lever completely on. (points straight up)
  - Make sure the Rinse lever is completely off. (point horizontal)
  - Start by cleaning walls, urinals, and toilets and work your way to the floor using the yellow spray gun.
  - Make sure not to splash the spray on yourself or paper dispensers.
  - Allow detergent to work for 5 minutes.



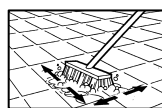
#### STEP 4

- Make sure the cleaner with bleach solution is applied to the floor area around urinals and under toilets.



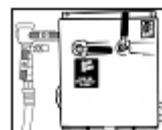
#### STEP 5

- Clean one wall at a time and allow for the scrubbed surface to stand for about 5 minutes.
- Rinse wall thoroughly using clean water from the 2 lever unit.



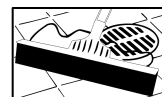
#### STEP 6

- Use deck brush to scrub floor. Scrub floor along grout lines. Scrub in both directions until grout is clean.
- Allow solution to sit for 5 minutes.



#### STEP 7

- Rinse by turning the Comet with Bleach lever completely off. (points horizontal)
- Spray walls, urinals, toilets and floors with rinse water using the yellow spray gun.



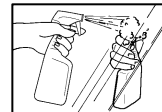
#### STEP 8

- Squeegee liquid into a floor drain.



#### STEP 9

- Wipe exterior surface of toilets and urinals with a clean paper towel.
- Discard paper towel.



#### STEP 10

- Spray 3-in-1 all-purpose cleaner onto mirror.



- Wipe clean with paper towel.
- Discard paper towel.



#### STEP 11

- Check and refill Safeguard Soap dispensers and paper towel dispensers.
- Clean the exterior of dispensers by spraying 3-in-1 all-purpose cleaner and wiping with a paper towel.



#### STEP 12

- Dry mop the floor when finished.
- Allow floor to dry before reopening the bathroom to guests.



#### STEP 13

- Remove and discard disposable gloves.
- Wash hands before returning to service area.