

# HOTEL GUEST BATHROOM CLEANING

## Tools Needed

- Sponges or Cleaning Towels
- Toilet Brush

## Products Needed

Spic and Span®  
Disinfecting  
All-Purpose  
Spray and  
Glass Cleaner  
(3-in-1)



Comet®  
Disinfecting  
Bathroom  
Cleaner



Swiffer®  
Sweeper &  
Dusting Cloths



**FREQUENCY OF CLEANING:** After every occupancy.

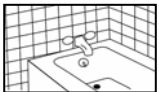
**SPECIAL DIRECTIONS FOR THIS TASK:** If sensitivity to cleaning solutions is a concern, wear disposable gloves.



### TUB, SHOWER, SHOWER WALLS, AND SHOWER ENCLOSURE

#### STEP 1

- Spray bathroom cleaner directly onto surfaces to be cleaned.
- Spread product across entire surface. For tough soils, allow cleaner to soak for 10 minutes.



- Scrub all surfaces with sponge or cleaning towel.
- Rinse all surfaces with water. Begin rinsing at the top of shower wall and/or enclosure. Continue rinsing from top to bottom.
- Buff surface with a dry towel.

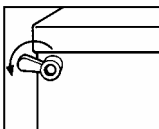
**NOTE:** Do not use bathroom cleaner on natural marble.



### TOILET BOWL (INTERIOR SURFACES)

#### STEP 2

- Spray bathroom cleaner into bowl and under rim of bowl.
- Brush or wipe all interior surfaces thoroughly.



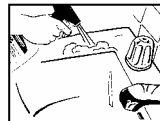
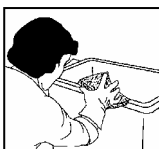
- Flush toilet.



### TOILET BOWL (EXTERIOR SURFACES)

#### STEP 3

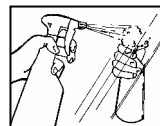
- Spray 3-in-1 all purpose spray and glass cleaner onto exterior surfaces of toilet.
- Wipe with clean towel.



### SINKS AND COUNTERTOPS

#### STEP 4

- Spray 3-in-1 all purpose spray and glass cleaner onto countertop and sink surfaces.
- Wipe with clean towel.



### MIRRORS

#### STEP 5

- Spray 3-in-1 all purpose spray and glass cleaner onto mirrors.
- Wipe with clean towel.



**NOTE:** If streaking occurs, use less product and/or do not buff completely dry. Use a separate towel when cleaning glass and mirrors.



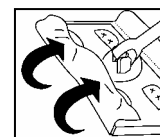
### FLOOR

#### STEP 6

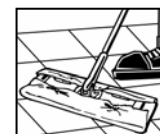
- Spray 3-in-1 all purpose spray and glass cleaner on floor.
- Wipe with clean towel.



**NOTE:** Allow floor to dry completely before using Swiffer. Swiffer dusting cloths must be used on dry surfaces. Do not spray anything on Swiffer dusting cloth.



- Attach Swiffer dusting cloth to sweeper.



- Sweep floor with Swiffer sweeper to pick-up hair and dirt.

**NOTE:** Be sure to use both sides of dusting cloth. Use one dusting cloth to clean 16 rooms, 8 rooms per side.