

HOTEL HAIR AND DUST REMOVAL

Product Needed
Swiffer®
Sweeper & Dusting Cloths



Product Needed
Swiffer®
Sweeper & Dusting Cloths



FREQUENCY OF CLEANING: After every occupancy.

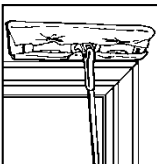
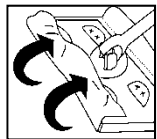
GUEST ROOM BEDROOM AND BATH



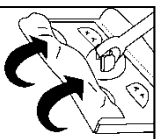
STEP 1

TVs, doors and window frames, plants and other hard-to-reach or clean surfaces.

- Wipe surface with Swiffer dusting cloth.
- Attach Swiffer dusting cloth to sweeper for hard-to-reach surfaces.



NOTE: Swiffer must be used on dry surfaces. Do not spray anything on cloth. Be sure to use both sides of cloth.



STEP 2

Removing hair from the bathroom floor.

- Allow floor to dry completely before using Swiffer.
- Attach Swiffer dusting cloth to sweeper.
- Sweep floor with Swiffer sweeper to pick-up hair and dirt.



NOTE: Swiffer cloths must be used on dry surfaces. Do not spray anything on cloth. Be sure to use both sides of cloth. Use one cloth to clean 16 rooms, 8 rooms per side.

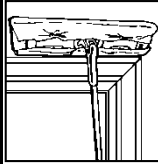
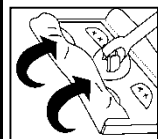
LOBBY AND OFFICES



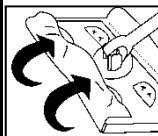
STEP 1

TVs, doors and window frames, plants and other hard-to-reach or clean surfaces.

- Wipe surface with Swiffer dusting cloth.
- Attach Swiffer dusting cloth to sweeper for hard-to-reach surfaces.



NOTE: Swiffer must be used on dry surfaces. Do not spray anything on cloth. Be sure to use both sides of cloth.



STEP 2

Hard surface floors

- Attach Swiffer dusting cloth to sweeper.
- Sweep floor with Swiffer sweeper to pick-up hair and dirt.



NOTE: Swiffer cloths must be used on dry surfaces. Do not spray anything on cloth. Be sure to use both sides of cloth.