

Warnings:

- Children being supervised should not be allowed to play with the appliance.
- The maximum and minimum ambient temperatures for correct operation are **0 to 50 degrees Celsius (32 to 122 degrees Fahrenheit)**.
- This appliance is **not suitable for installation** in an area where a water jet could be used.
- Please take necessary precautions during maintenance operations. Clean dispenser as needed. Wipe to clean using a soft, lint free towel. Use water and mild detergent (exterior surfaces only).
- Operating sound level of the dispenser is less than 70 dBa.

Models: 5511201 and 5511281

WEEE Marking :

- The product has been designed with recycling, reuse, and waste management as a consideration. SCA will provide the necessary information to recycling facilities and government agencies as required by WEEE Directive. For more information, please contact SCA at sca-tork.com.
- The product will be labeled with the WEEE marking as shown on the side in accordance with European Standard EN 50419.
- The proper disposal of WEEE products will conserve natural resources (through re-use and recycling) and protect environmental and human health through proper disposal.
- The presence of the WEEE mark indicates your responsibility for properly disposing of the product. Marked products must not be disposed of as a part of commercial, institutional and/or municipal waste. WEEE labeled products must be kept separate and returned to a designated collection point for their dismantling, recycling, and/or reuse.
- The separate collection and recycling of your waste equipment at the time of disposal will help to conserve natural resources and ensure that it is recycled in a manner that protects human health and the environment. For more information about where you can drop off your waste equipment for recycling, please contact your local city office, your commercial, institutional and/or municipal waste disposal service or the location where you purchased the product.



T0012-048C

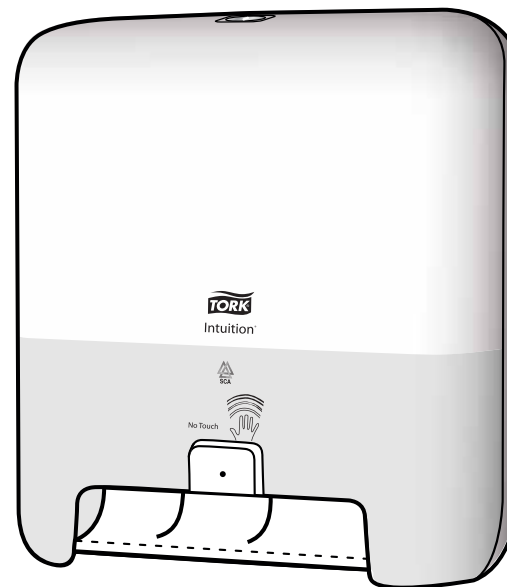
1/2012

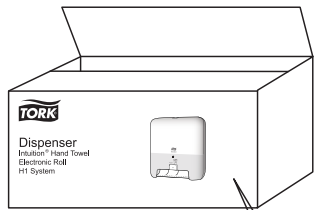
Manufactured By: SCA TISSUE NORTH AMERICA
Philadelphia, PA 19104
www.torkusa.com



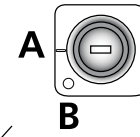
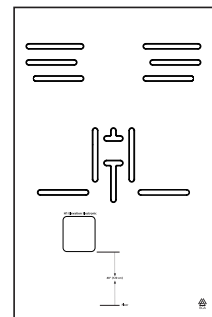
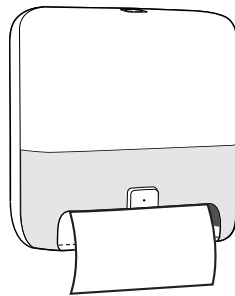
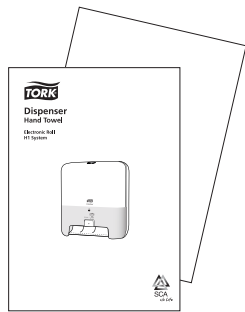
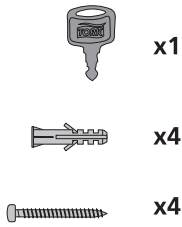
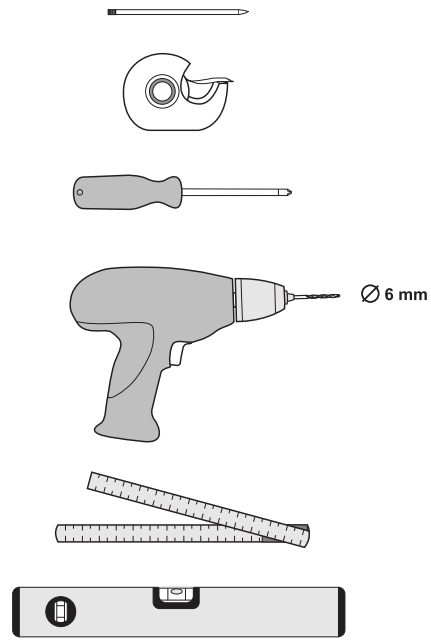
Dispenser Intuition® Hand Towel

Electronic Roll
H1 System





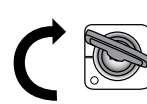
+



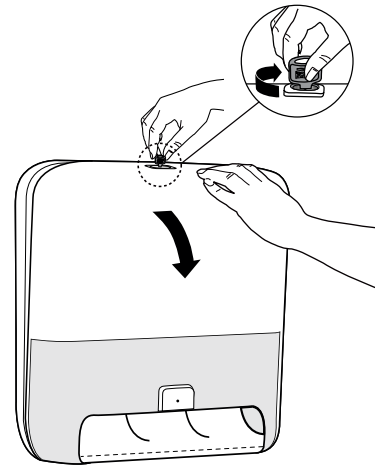
1.



2.



3.



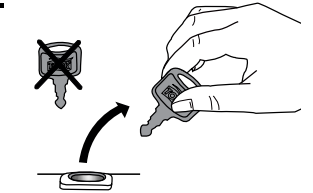
1.



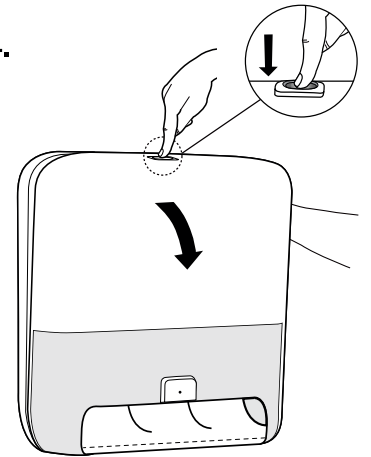
2.



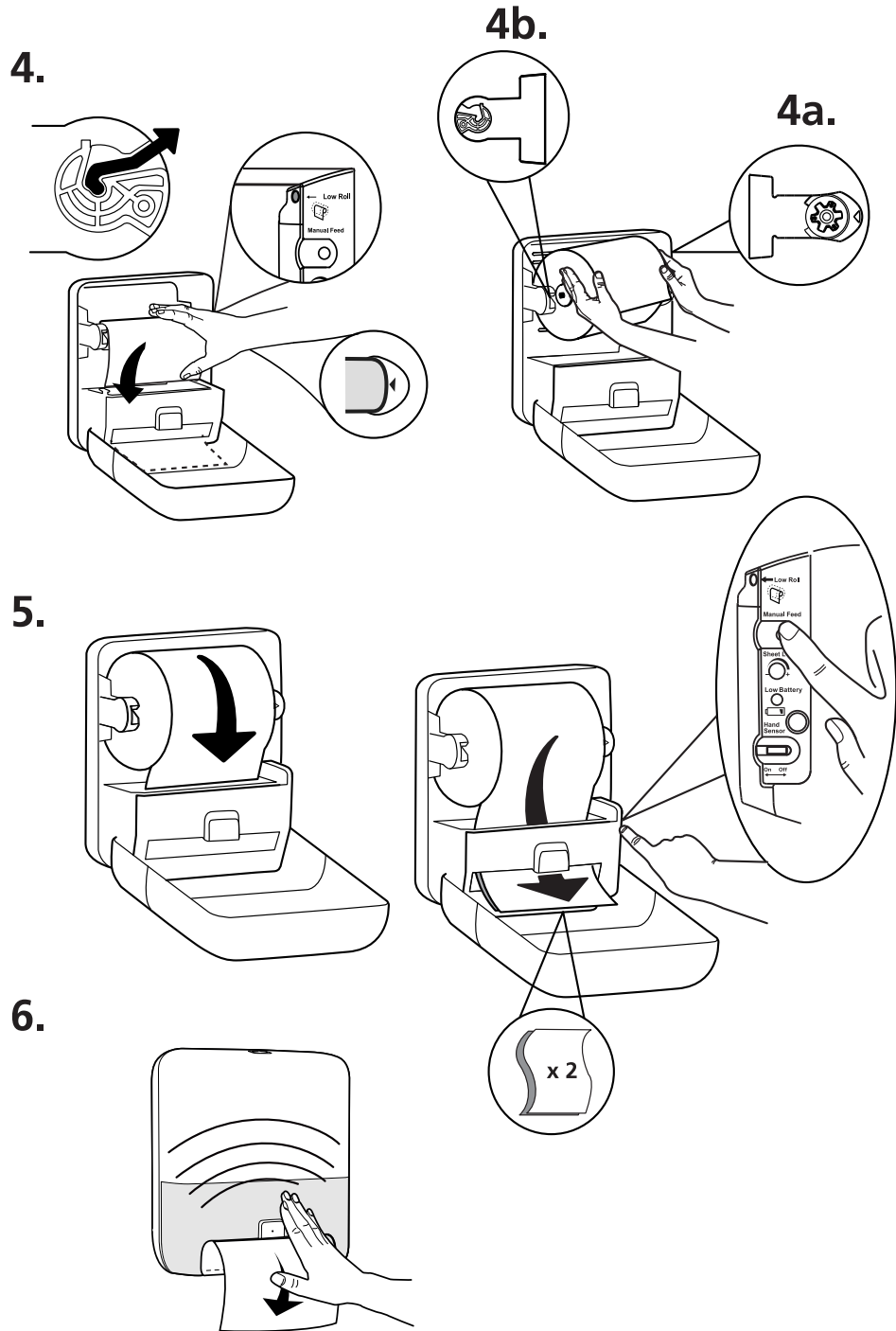
3.



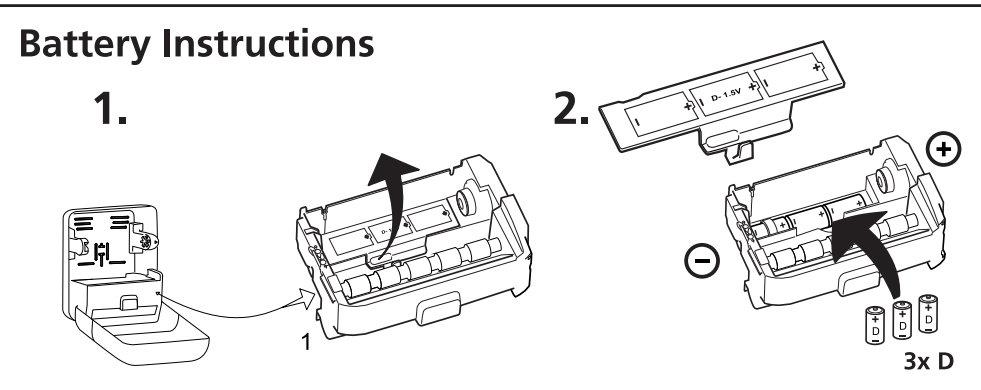
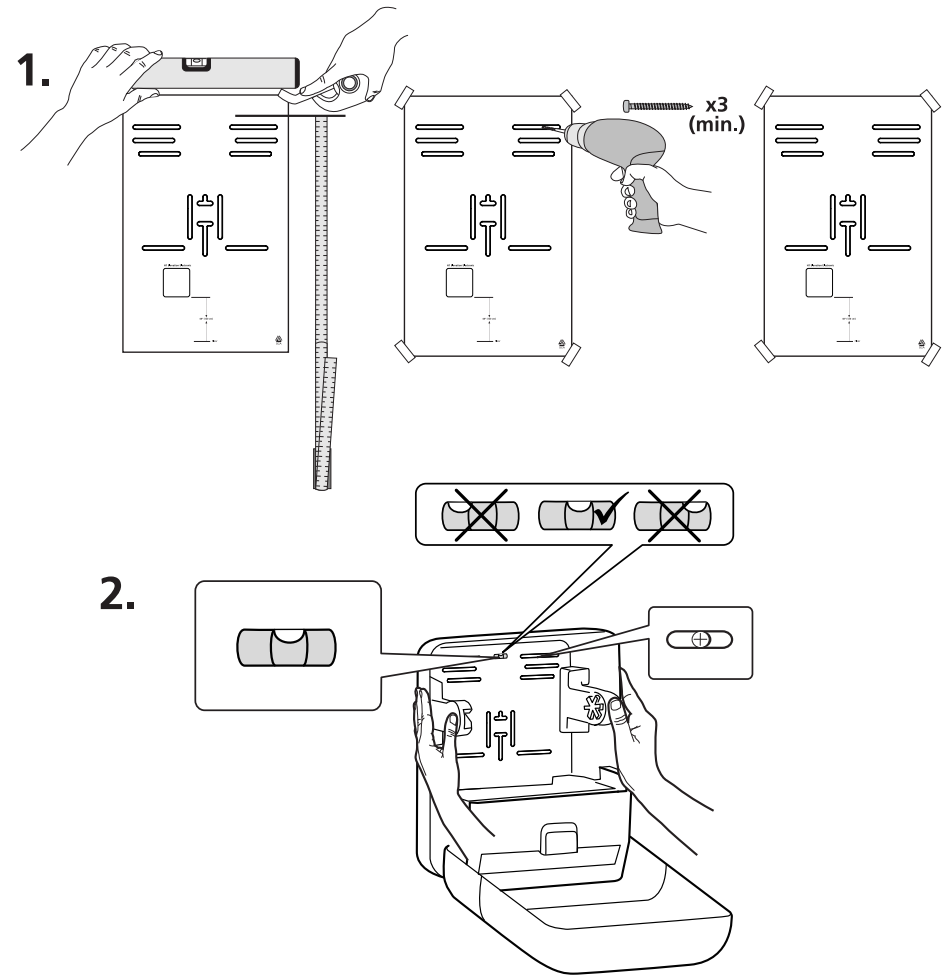
4.

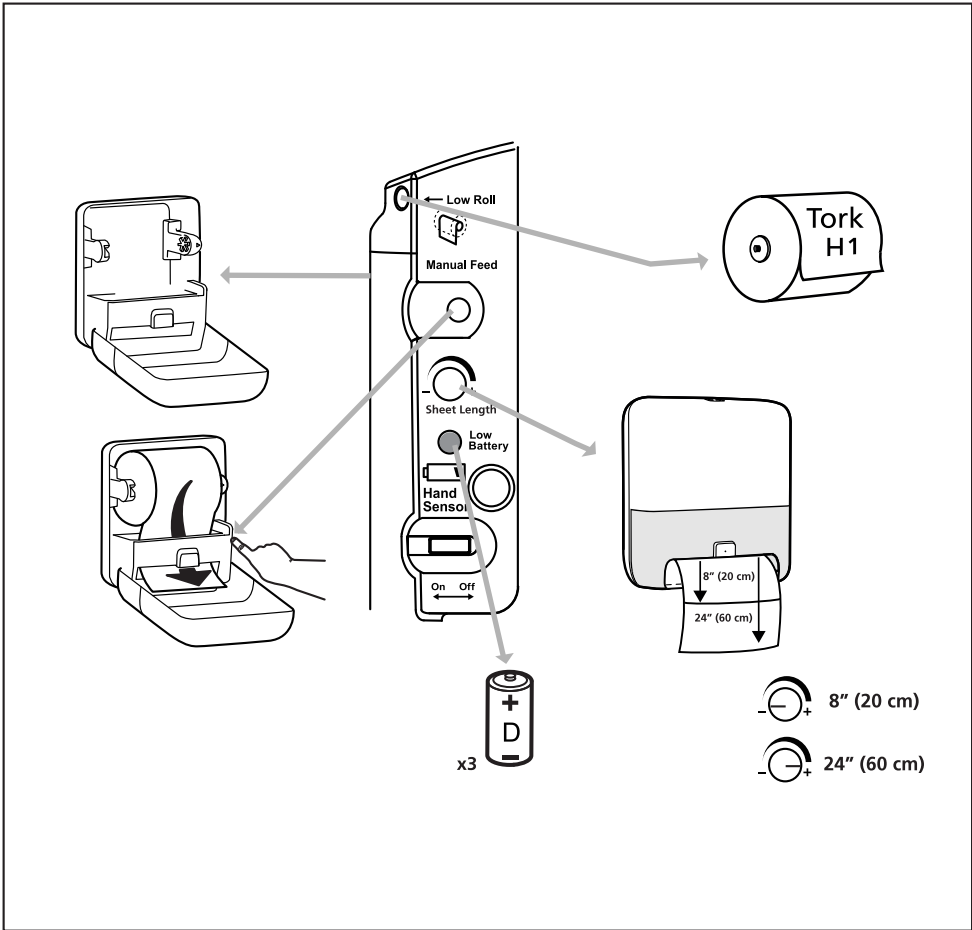


Loading using stub roll



Installation Instructions





Loading Instructions

