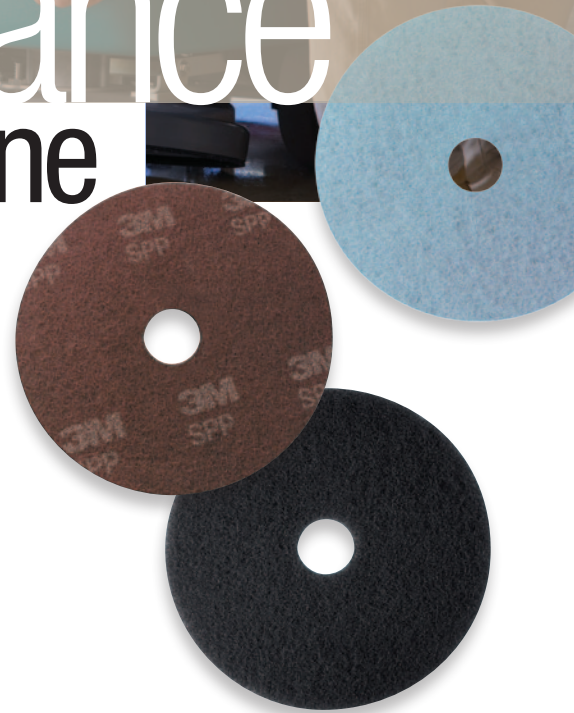




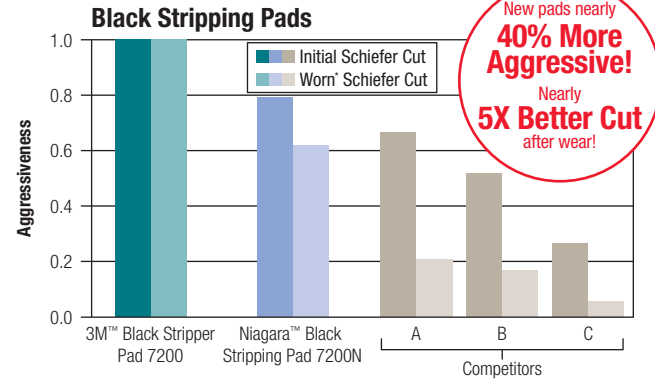
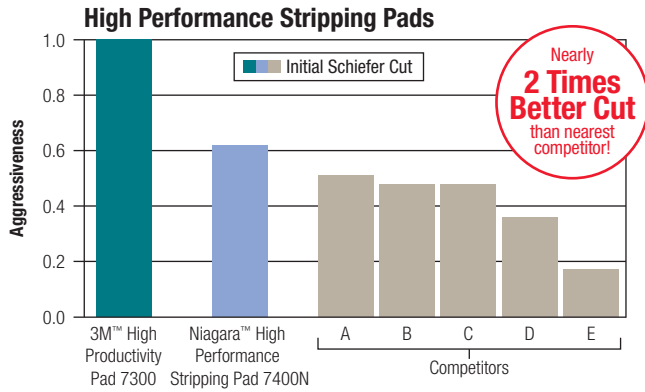
Consistent Performance Long Lasting Shine

3M™ Floor Pads

- Remove deep scuff marks 7 times faster*
- Nearly 40% more aggressive floor stripping*
- 25% better cut on Schiefer test*
- 50% better burnishing durability*

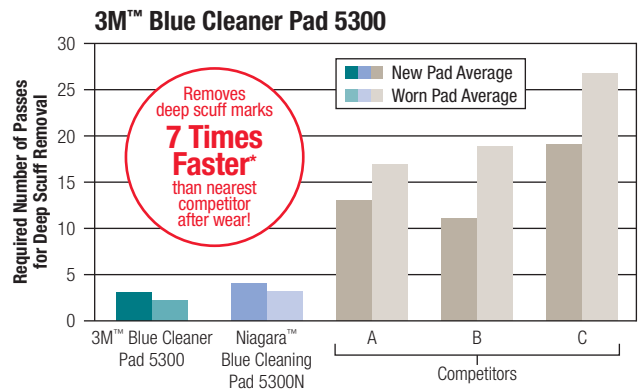
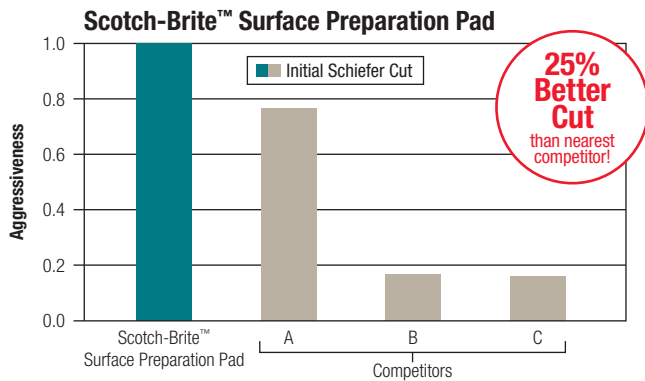


Floor Stripping: Aggressiveness

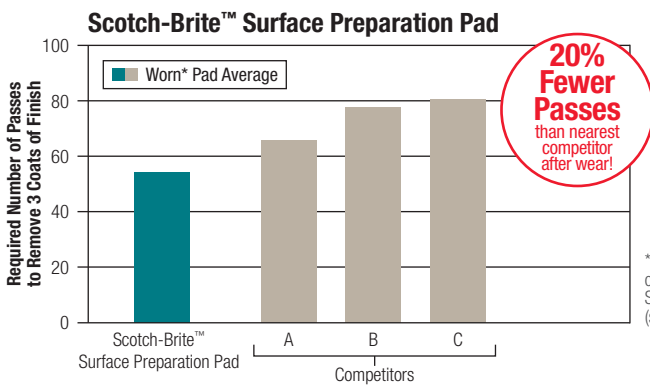


*Pads worn via 50 passes over 3M™ Safety-Walk™ Slip-Resistant Treads 610 (swing machine)

Deep Scrubbing: Aggressiveness, Floor Finish & Deep Scuff Removal



*Worn pad average

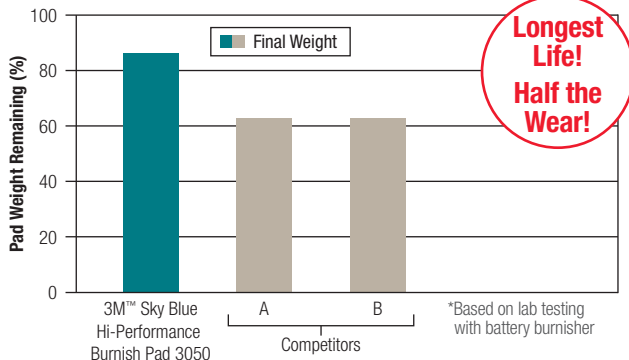


*Pads worn via 25 passes over 3M™ Safety-Walk™ Slip-Resistant Treads 610 (swing machine)

Burnishing: Durability

3M™ Sky Blue Hi-Performance Burnish Pad 3050

After burnishing 350,000 square feet of flooring, pad weight loss was less than 15% versus 32% and 33% with competitive pads*










*Based on lab testing with battery burnisher



How To Choose The Right Pad For The Job

Select the appropriate maintenance operation, machine type and speed, then follow the color bar to the recommended 3M™ Floor Pad.

Maintenance Operation	Equipment	3M™ Floor Pad
	Speed	
Stripping To remove finish, sealer and contaminants from the floor surface. Done at the start of a maintenance program and at times when scrubbing will not achieve the desired results.	Rotary or Automatic	 3M™ High Productivity Pad 7300 Most aggressive stripping pad. Unique open construction resists loading and clogging. For fast removal of finish and proven consistent stripping.
	Low Speed 175–600 RPM	
Scrubbing Done prior to replacing worn finish; provides a fresh new surface to maintain.	Rotary or Automatic	 Scotch-Brite™ Surface Preparation Pad Heavy duty scrubbing for 2–4 coat removal prior to recoating.
	Low Speed 175–600 RPM	
Cleaning To remove light soil, scratches, scuff marks and black heel marks.	Rotary or Automatic	 3M™ TopLine Autoscrubber Pad 5000 Scrubs and cleans without dulling the finish. Open construction resists clogging. Ideal for use on an autoscrubber.
	Low Speed 175–600 RPM	
	Rotary or Automatic	 3M™ Red Buffer Pad 5100 Use to light scrub without dulling the finish. Can be used for everyday cleaning under an automatic scrubber. Also designed for spray buffing. Cleans when damp; buffs when dry.
	Low Speed 175–600 RPM	
Burnishing To repair finish and improve gloss and image clarity of floor surface.	Electric Battery Propane	 3M™ Eraser Burnish Pad 3600 Removes black marks and returns gloss in fewer passes than other pads. Ideal for harder finishes and high traffic areas. Excellent durability and minimal finish removal.
	Scuff & Mark Removal	
Best Gloss	Electric Battery Propane	 3M™ TopLine Speed Burnish Pad 3200 Optimizes UHS burnishing on a wide variety of finishes. Combines black mark removal and gloss generation in one pad.
	Ultra High Speed 1500 RPM & Above	
Soft Finish	Electric Battery Propane	 3M™ Sky Blue Hi-Performance Burnish Pad 3050 Restores gloss to dull floors. Designed for frequent burnishing with less dust, point build-up and burning, this pad is an excellent addition to 3M's high-performing line of burnishing pads.
	Ultra High Speed 1500 RPM & Above	

3M™ Floor Pads

A superior product you can rely on.

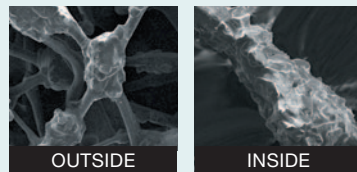
Every 3M™ Floor Pad is made to high quality standards. And ongoing innovation and advancements in technology make 3M floor pads more effective than ever.

- Each floor pad in 3M's full line is engineered specifically for a particular maintenance task.
- 3M floor pad uniformity and quality helps produce:
 - less machine wobble and vibration.
 - less operator fatigue.
 - prolonged useful life of the pad.
 - better results on your floors.
- Uniform coating throughout every 3M floor pad helps produce a long, useful life, resulting in less pad usage. Plus 3M pads are washable and reusable.

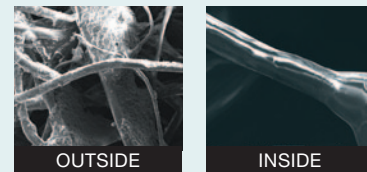
All Floor Pads Are NOT Created Equally

The differences between floor pads may seem small. But when added up, they can make a big difference to your bottom line in terms of productivity and labor costs. Consider the following attributes of 3M floor pads that help set them apart from the competition:

Uniform distribution of mineral abrasives throughout pad — not just on the surface — offers impressive performance and a long, useful life.

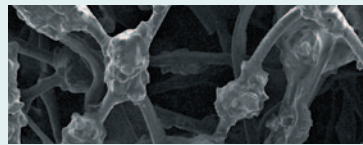


3M™ Floor Pads



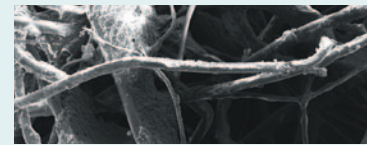
Other

Individually separated and coated fibers help produce more consistent results.



3M™ Floor Pads

- Fibers are uniformly coated with resin and mineral, producing more consistent, high-quality results.
- Combination of highly conformable fibers help provide maximum pad-to-floor contact.



Other

- Fibers are randomly coated with resin and mineral, which can produce inconsistent results.
- Larger fibers are less conformable, providing fewer contact points with the floor.

Technical Information: The technical information, recommendations and other statements contained in this document are based upon tests or experience that 3M believes are reliable, but the accuracy or completeness of such information is not guaranteed.

Product Use: Many factors beyond 3M's control and uniquely within user's knowledge and control can affect the use and performance of a 3M product in a particular application. Given the variety of factors that can affect the use and performance of a 3M product, user is solely responsible for evaluating the 3M product and determining whether it is fit for user's particular purpose and suitable for user's method of application.

Warranty and Limited Remedy: 3M warrants that each 3M product will be free from defects in material and manufacture for 90 days from the date of purchase from 3M's authorized distributor. 3M MAKES NO OTHER EXPRESS OR IMPLIED WARRANTIES, INCLUDING ANY IMPLIED WARRANTY OF MERCHANTABILITY OR FITNESS FOR A PARTICULAR PURPOSE. If a 3M product does not conform to this warranty, the sole and exclusive remedy is, at 3M's option, replacement of the 3M product or refund of the purchase price.

Limitation of Liability: Except where prohibited by law, 3M will not be liable for any loss or damage arising from the 3M product, whether direct, indirect, special, incidental or consequential, regardless of the legal theory asserted.



**Building and Commercial
Services Division**
3M Center
St. Paul, MN 55144-1000
www.3M.com/building

Please recycle. Printed in U.S.A.
© 3M 2012. All rights reserved.
78-8134-0152-4 Rev. A

3M, Niagara, Safety-Walk and Scotch-Brite are trademarks of 3M. Used under license in Canada.